

JV Elite™

SYNTHETIC SURFACES

JV Elite™ is a rubber sheet product that holds up to the high traffic and heavy use of today's athletic facilities. It's versatility and high performance make it ideal for a variety of applications, including: walking tracks, exercise/aerobic rooms, weight rooms, multipurpose areas and ice arena walk-off areas.



INFINITY
Wood Floors



AACER
SPORTS FLOORING



Material

Rubber granules on a base of recycled material and EPDM color granules bonded with polyurethane.

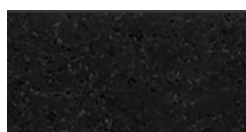
Surface Design

Fine granule structure with 10% colored granules.

Note: 20% granules available

COLOR AVAILABILITY

Colors are representational only. Contact Acer for actual color samples.



Basic Black



Buff Blue



Rippin Red 10



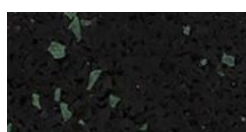
Grippin Gray 10



Pumpin Purple



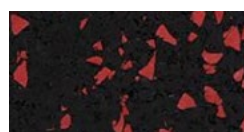
Yellow Surge



Green Tea 3



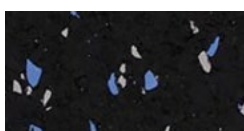
Buff Blue 20



Rippin Red 20



Grippin Gray 20



Buff Blue / Gray10



Rippin Red / Gray



Bluejays



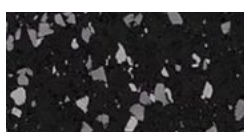
Cardinals



Gators 3



Lions



Raiders



Tigers



Vikings



Whey Protein 2



Wildcats

PERSONALIZATION

Incorporate school logos into the floor design. Ask your sales representative how you can customize your floor.

Installation

Fully Adhered / Floating
*interlocking tiles do not require adhesive

Green Status and LEED Contributors



Mercury-Free
*Contact your Sales Representative for LEED information.

Roll Width

4 feet

Tile Size

36" x 36" square tile
(9.0 sq.ft.)

36" x 36" interlocking tile
(7.5 sq.ft.)

*7.5 sq. ft. does not include tabs

Thickness

6mm, 8mm, 10mm, 12mm

Volumetric Weight

1.9 lbs. / sq. ft. (8mm)

Option

Interlocking Tile

It is the policy of Infinity Wood Floors to continuously improve its line of products. Therefore, Infinity Wood Floors reserves the right to change, modify or discontinue systems, specifications and accessories of all products at any time without notice or obligation to purchaser.